

13 April 2023

Hillmoor Ad Hoc Committee

presented by Paula Porubcan

Environmental Compliance

State and Federal Legislation

Triggered whenever State or Federal Permits and/or Funding are involved in a project; and often triggered when projects occur on public lands (municipal, county, state, federal).

Natural Resources (examples)

Water Quality, Drainages and Lakes, Streambank erosion

Threatened and Endangered Species (plants, animals, aquatic species, birds, etc.)

Migratory Bird Routes

Cultural Resources

Standing Architecture and Historic Districts (e.g. Horticultural Hall, Maple Park Historic District)

Cultural Landscapes (e.g., Oak Hill Cemetery, Yerkes, potentially Hillmoor golf course?)

Archaeological Sites (prehistoric and early historic, 10,000 BC thru WWII era)

Examples: Federal

FHWA (Federal Highways Administration) (roads, bridges, railroads, airports)

FCC (Federal Communications Commission) (cell towers)

FERC (Federal Energy Regulatory Commission) (gas pipelines)

Examples: State.

WI DOT, Local Roads (roads, bridges)

WI DNR (e.g. projects that are in, or adjacent to, floodplains, wetlands, drainages and rivers, lakes)

Knowles-Nelson Grant (state permits and funds, and possibly federal funds)

Case Study: How WI DNR will address natural and cultural resource Compliance for the Knowles-Nelson Grant

Overview of Archaeology in and around Lake Geneva

- People living continuously in this area since glaciers retreated, about 10,000 BC
- 100's of archaeological sites in area (e.g., prehistoric campsites, villages, mounds, trails; early historic homesteads, schools, mills)
- Info on location, boundaries, details of what they contain: protected, FOIA exempt

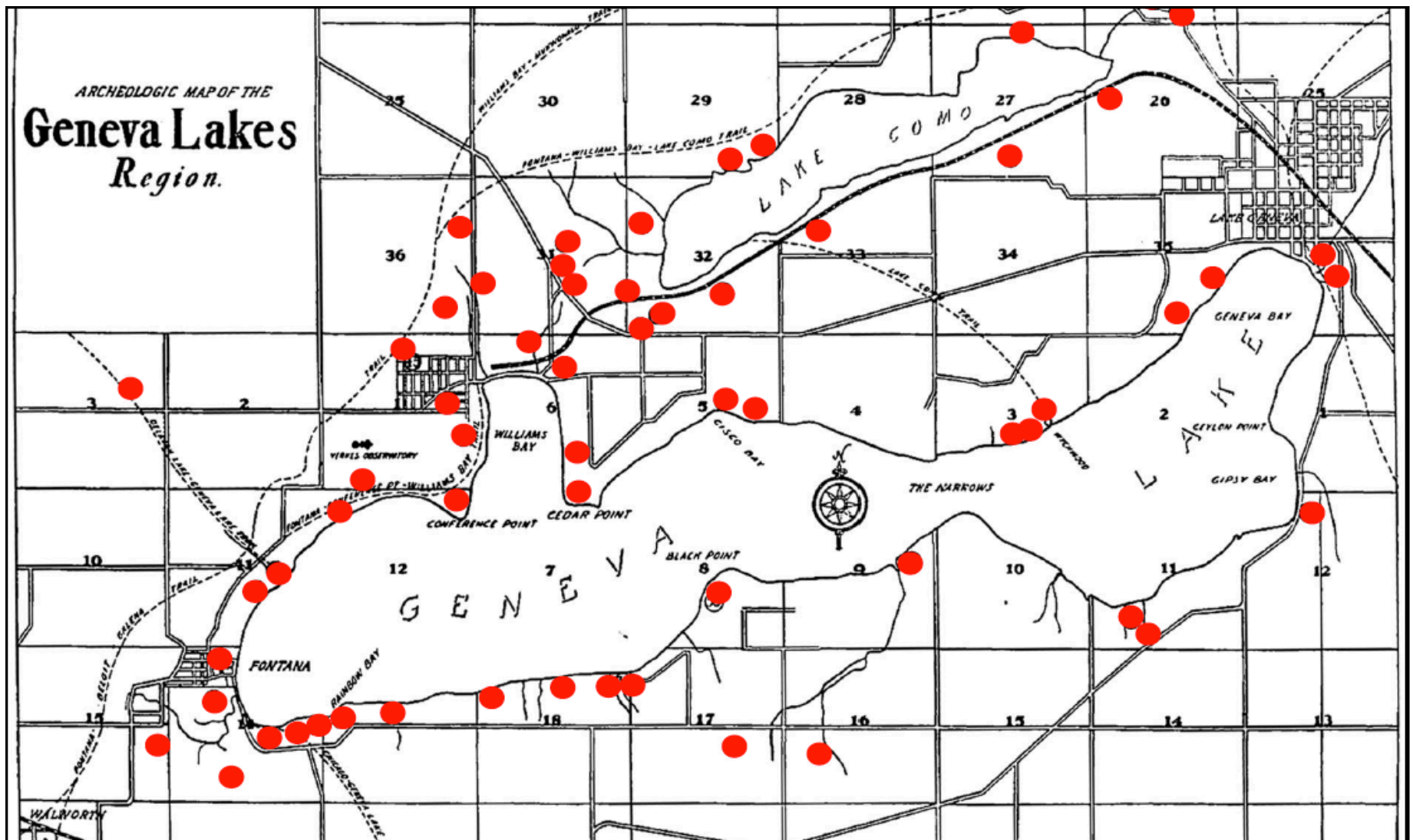
Example: Hillmoor property

- Landscapes with high and moderate potential for containing a archaeological sites
- Methods for finding and evaluating archaeological sites, permits for work on public lands, RFPs and State and Federal requirements for using qualified archaeologists
- Very rarely does the presence of an archaeological site hold up construction
- **Importance of early planning, chance to redesign if necessary**

Importance of a Master Plan for Hillmoor

Together with the Overall Vision of how the community would like to utilize the property, and together with what is financially feasible

We need to know: what the property contains and what issues need to be considered (e.g., underground utilities, threatened species, water flow and quality issues, stream bank erosion, archaeological sites, required permits, present or potential dangers, access, traffic, etc.)



*Site locations and boundaries are approximate. In order to protect sites, as well as discourage trespass on to private lands, information about the exact locations, boundaries, and contents of archaeological sites is protected (and exempt from FOIA requests). However, land managers and land owners may have information about sites located on land they manage or own.

Typical Prehistoric Artifacts Found in the Lake Geneva Area

Spear Points and Knives



“Arrowheads”



Drills



Bone Tools



Celts



Axes



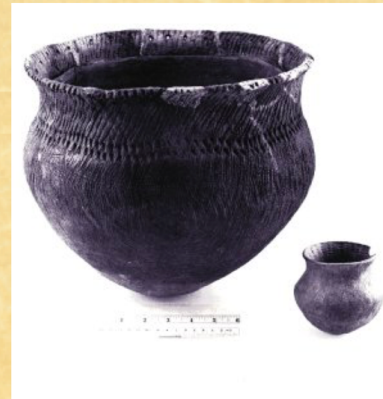
Copper Tools

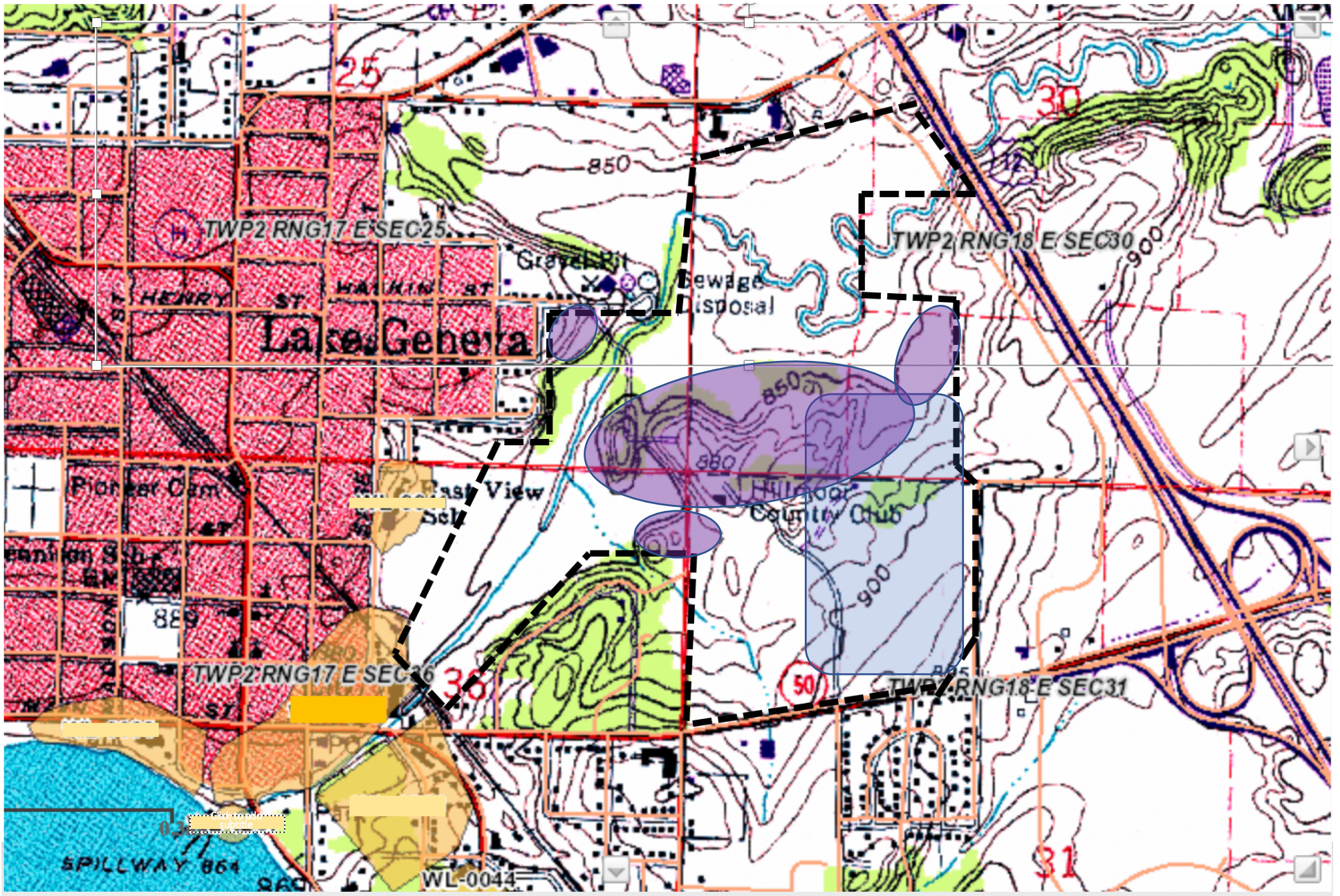


Pottery



“Flakes” (scrap left from making stone tools)





Black dashed line: Hillmoor property boundaries (approximate).

Purple shading: High Archaeological Potential (approximate). Blue shading: Moderate Archaeological Potential (approximate).